

ASCENT ON BOURKE WAREHOUSE, VERMICULITE FIRE SPRAY

Alexandria, NSW

SECTOR:

Industrial

PROJECT COMPLETION:

December 2024

ADDRESS:

520 Gardeners Road,
Alexandria, NSW

CLIENT:

FDC Construction

VALUE:

\$2.35M

PROJECT OVERVIEW:

Located in Alexandria, Ascent on Bourke is Sydney's leading multi-storey advanced warehousing project and office facility. Spanning nearly 27,000 sqm across two levels, this state-of-the-art development required advanced passive fire protection solutions.

SERVICES OFFERED:

Bowers were engaged by FDC Construction on behalf of Charter Hall to apply Vermiculite Fire Spray across structural elements, ensuring compliance with fire safety regulations. The scope of work included the application of fire spray across 7,420 lineal metres of structural steel, precast panel connections, and other passive fire protection solutions for construction joints.

PROJECT CHALLENGES:

A key challenge was the application of fire spray to the structural steel supporting the vehicle access ramps. This required strategic use of access equipment and careful scheduling to minimise disruption to site operations. Additionally, with structural columns reaching heights of up to 8 metres, specialised height-access solutions were essential to ensure precise and effective application.

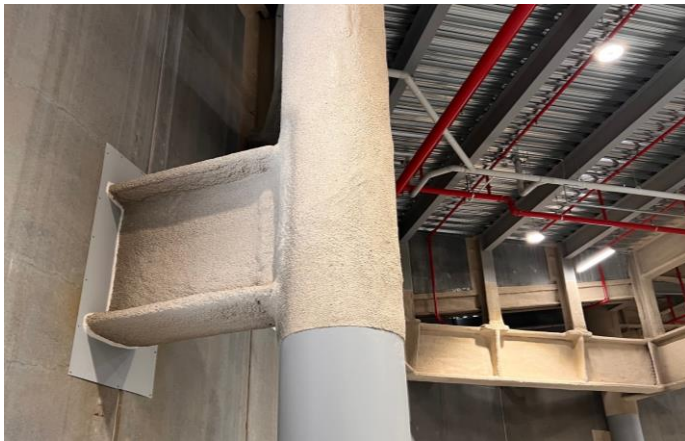
SOLUTIONS OFFERED:

Bowers' team of experienced applicators, highly proficient in operating Elevated Work Platforms (EWPs), effectively navigated the project's challenges with precision and efficiency. Through meticulous planning and coordination, the team seamlessly integrated their workflow with the client's schedule, ensuring the timely and uninterrupted delivery of services. By employing advanced application techniques, Bowers successfully applied the Vermiculite Fire Spray, achieving full compliance with fire safety requirements while delivering a high-quality, durable finish.

OVERALL OUTCOME:

Initially, there were concerns about the aesthetic impact of exposed fire spray as a finished surface within the facility. However, these concerns were alleviated upon seeing the high-quality finish achieved by Bowers' skilled applicators. The combination of expert execution and planning resulted in a seamless process and an exceptional outcome.





Unit 5, 19 McCauley Street
 Matraville NSW 2036
 T 02 9669 2283
 E inspections@bowsers.com.au
 W bowsers.com.au

